

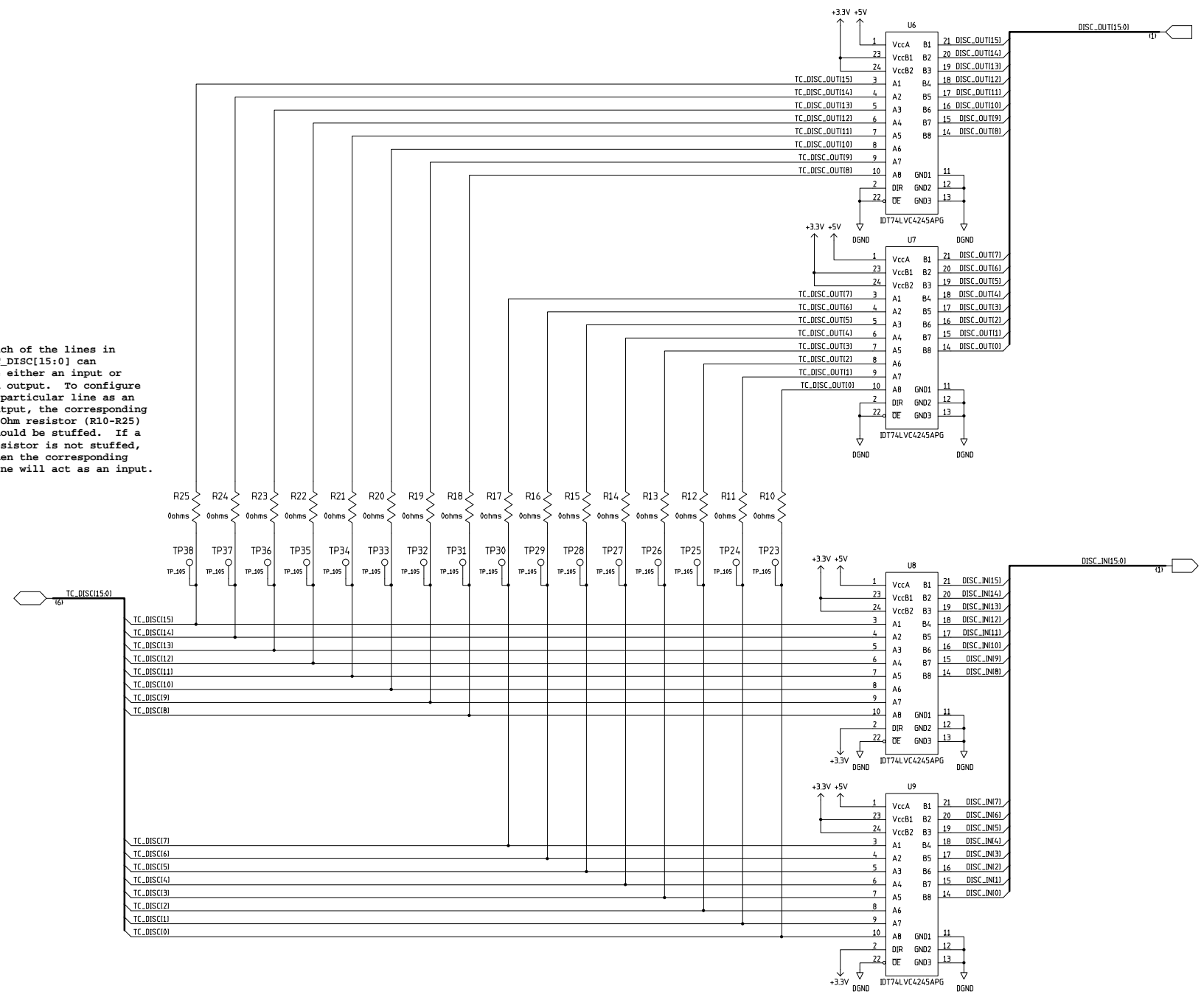
D


C

B

A

Each of the lines in TC_DISC[15:0] can be either an input or an output. To configure a particular line as an output, the corresponding 0-Ohm resistor (R10-R25) should be stuffed. If a resistor is not stuffed, then the corresponding line will act as an input.





SPACE DYNAMICS LABORATORY
 UTAH STATE UNIVERSITY RESEARCH FOUNDATION
 North Logan, Utah 84341

TITLE USUSAT / ION-F I/O Board - Discrete I/O			
SCHEMATIC NAME 30-0028A	INSTANCE NAME 30-0028	DRAWING NUMBER 30-0028	SCH REV A
SCHEMATIC 1 OF 1	INSTANCE 1 OF 1	SCH-INST SHEET 02 OF 06	

D

D

C

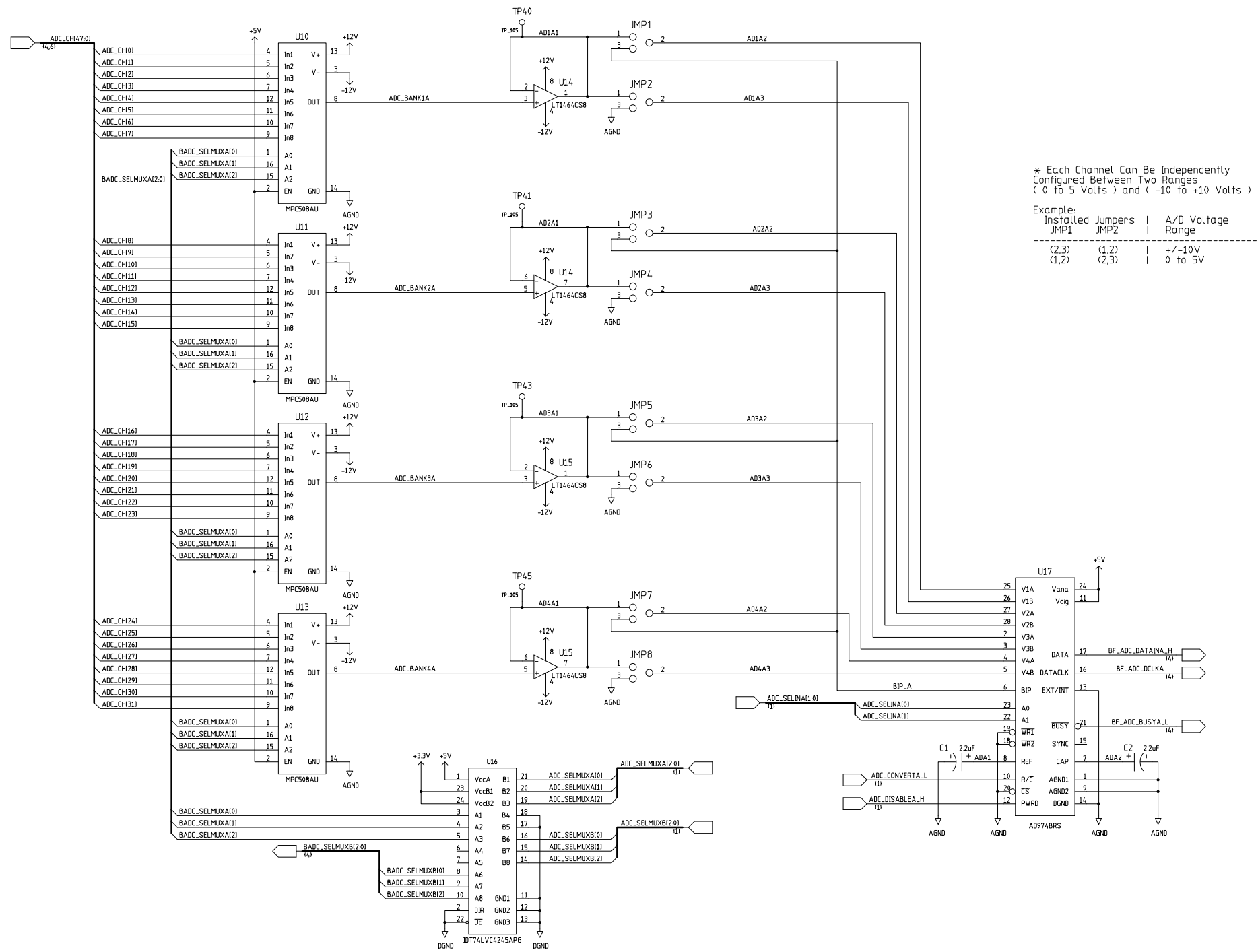
C

B

B


A

A



* Each Channel Can Be Independently Configured Between Two Ranges (0 to 5 Volts) and (-10 to +10 Volts)

Example:
 Installed Jumpers | A/D Voltage Range
 JMP1 JMP2 | +/-10V
 (2,3) (1,2) | 0 to 5V


SPACE DYNAMICS LABORATORY
 UTAH STATE UNIVERSITY RESEARCH FOUNDATION
 North Logan, Utah 84341

TITLE
USUSAT / ION-F I/O Board - A/D Interface Bank A

SCHEMATIC NAME 30-0028A	INSTANCE NAME 30-0028	DRAWING NUMBER 30-0028	SCH REV A
SCHEMATIC 1 OF 1	INSTANCE 1 OF 1	SCH-INST SHEET 03 OF 06	

D

D

Channel

48

49

50

51

52

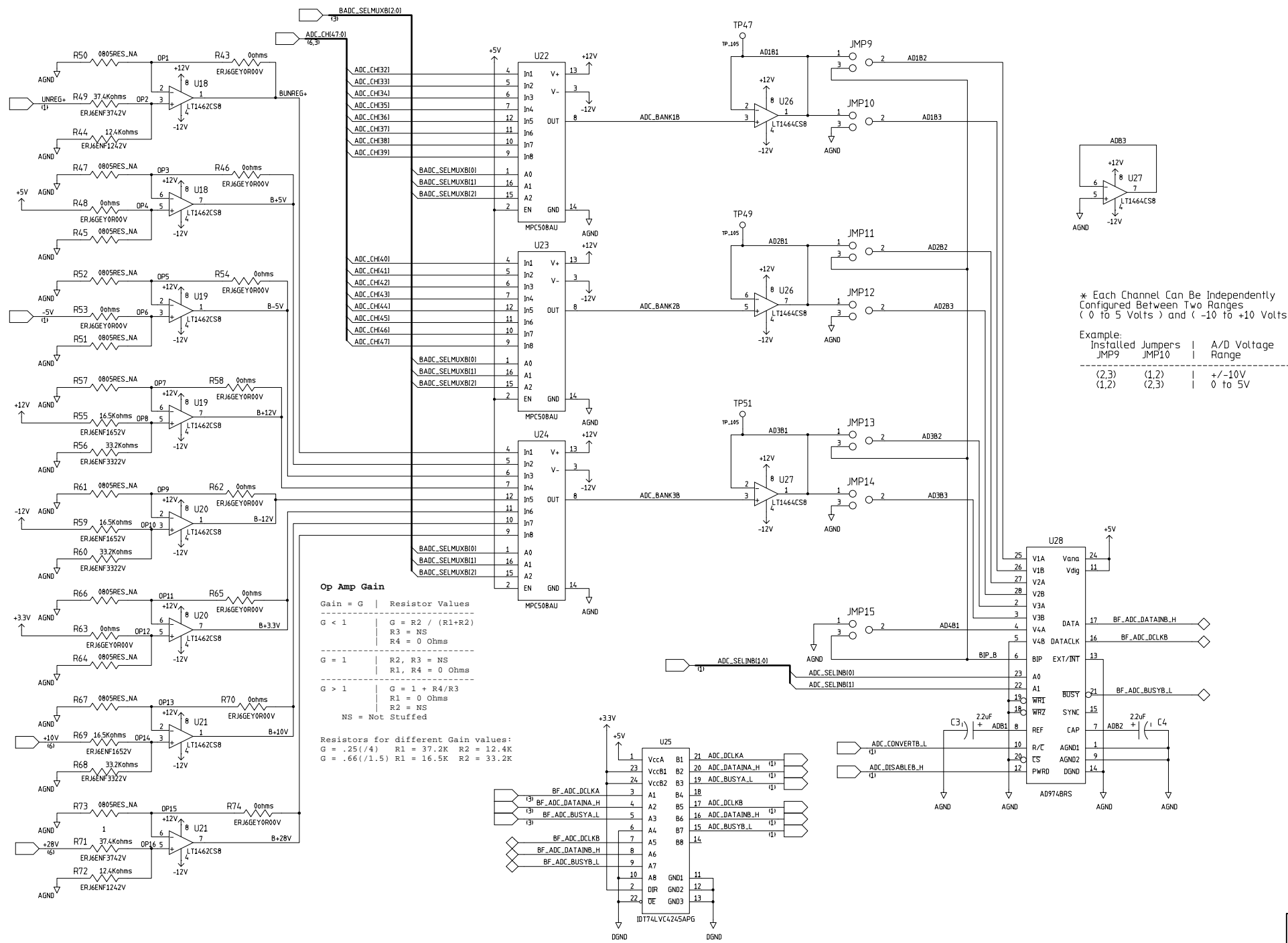
B


53

54

55

A



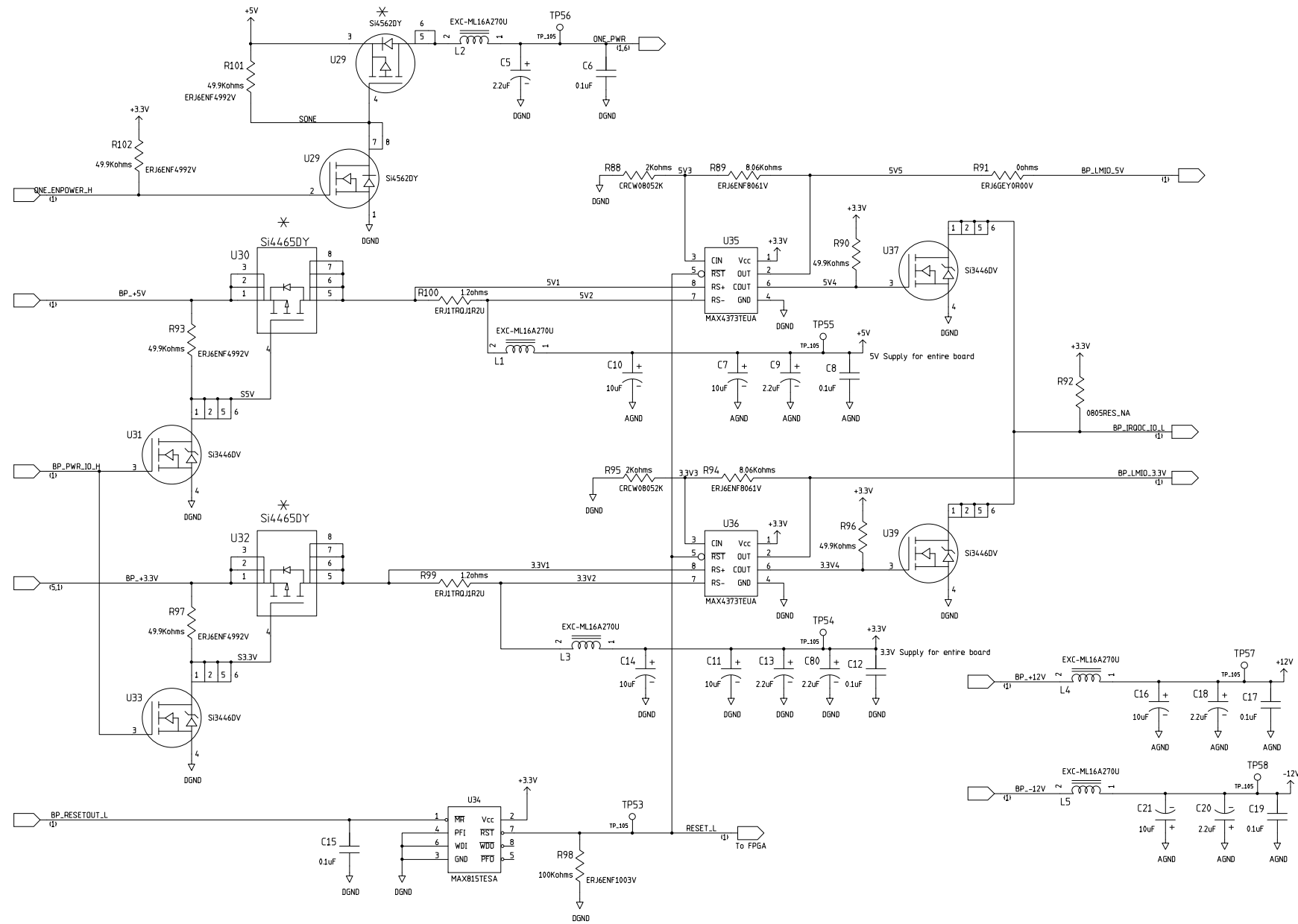

SPACE DYNAMICS LABORATORY
 UTAH STATE UNIVERSITY RESEARCH FOUNDATION
 North Logan, Utah 84341

TITLE: **USUSAT / ION-F I/O Board - A/D Interface Bank B**

SCHMATIC NAME: 30-0028A	INSTANCE NAME: 30-0028	DRAWING NUMBER: 30-0028	SCH REV: A
SCHMATIC: 1 OF 1	INSTANCE: 1 OF 1	SCH-INST SHEET: 04 OF 06	

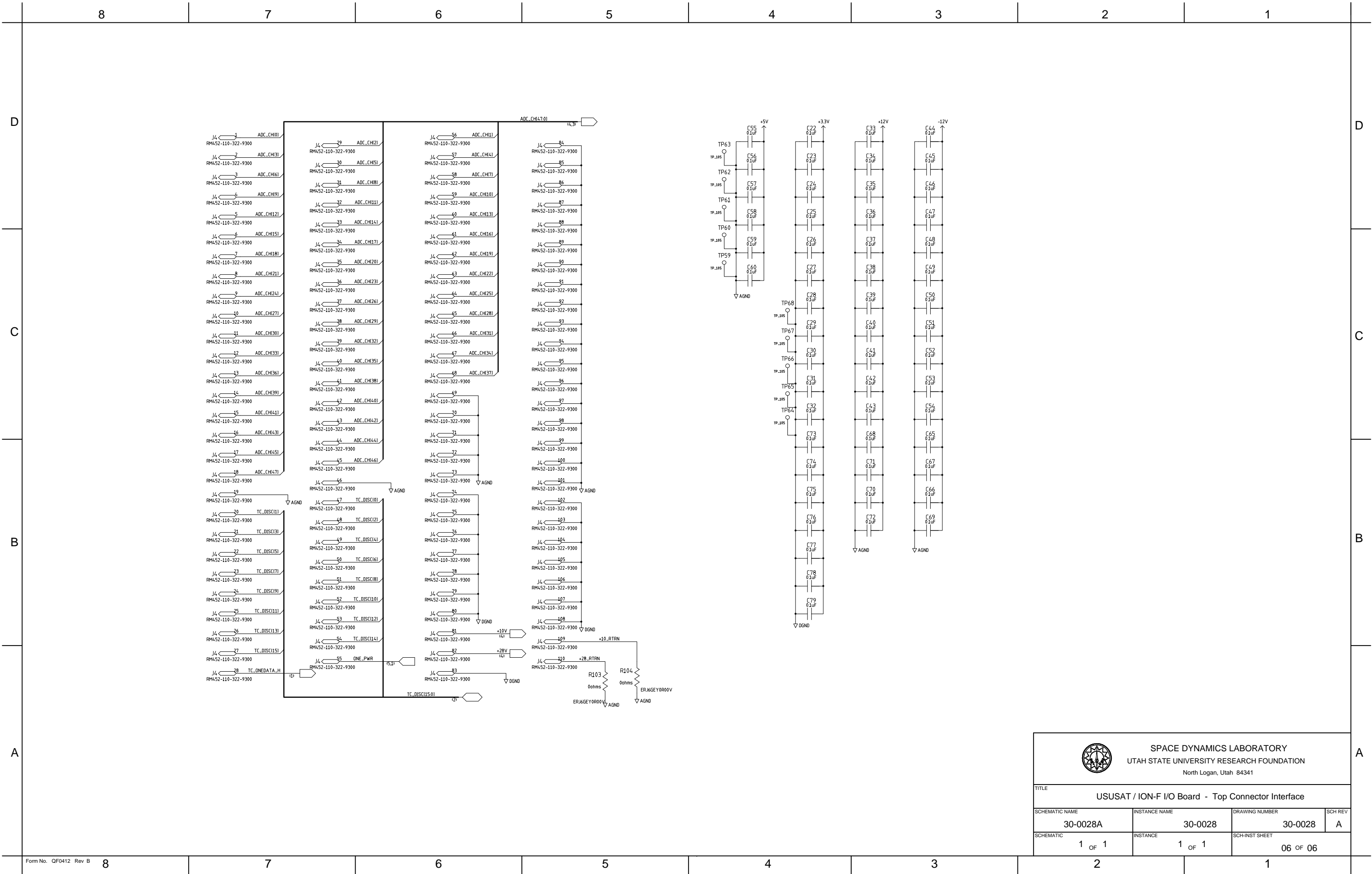
A


* Board was originally wired with these components in backwards



SPACE DYNAMICS LABORATORY
 UTAH STATE UNIVERSITY RESEARCH FOUNDATION
 North Logan, Utah 84341

TITLE USUSAT / ION-F I/O Board - Power			
SCHEMATIC NAME 30-0028A	INSTANCE NAME 30-0028	DRAWING NUMBER 30-0028	SCH REV A
SCHEMATIC 1 OF 1	INSTANCE 1 OF 1	SCH-INST SHEET 05 OF 06	



 SPACE DYNAMICS LABORATORY UTAH STATE UNIVERSITY RESEARCH FOUNDATION North Logan, Utah 84341			
TITLE USUSAT / ION-F I/O Board - Top Connector Interface			
SCHEMATIC NAME 30-0028A	INSTANCE NAME 30-0028	DRAWING NUMBER 30-0028	SCH REV A
SCHEMATIC 1 OF 1	INSTANCE 1 OF 1	SCH-INST SHEET 06 OF 06	