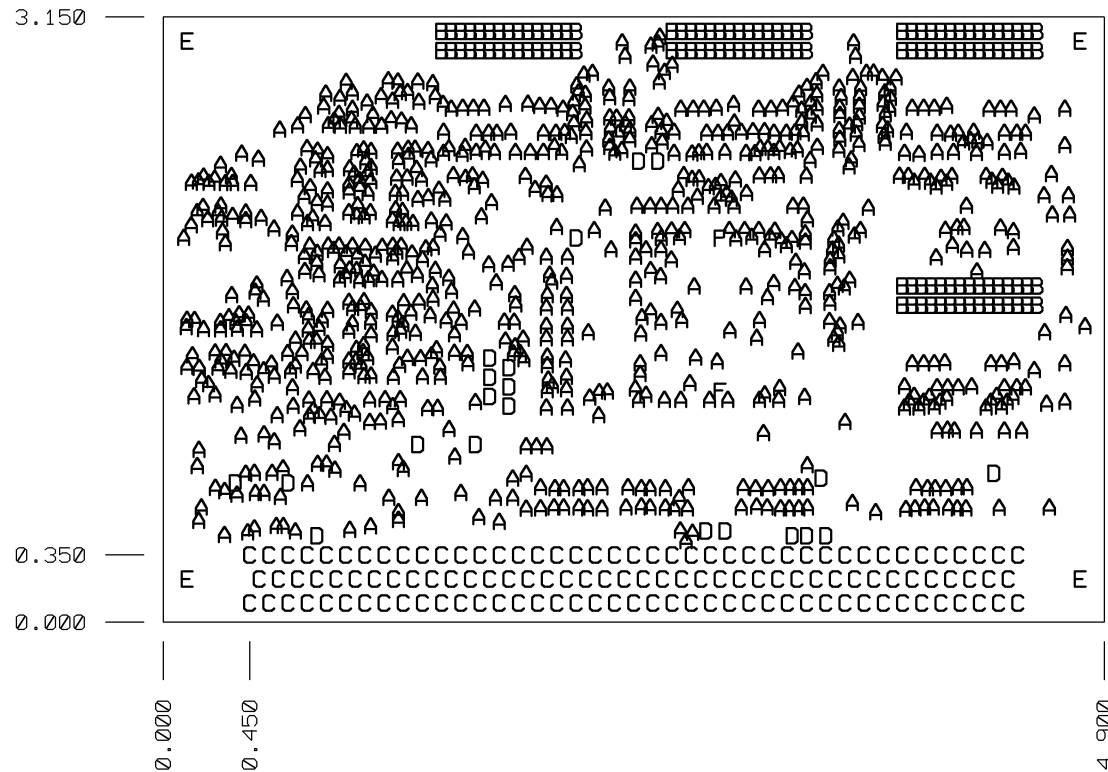


NOTES:

1. FABRICATE PER IPC-6012 CLASS 2.
2. BOARD CONSISTS OF 6 LAYERS OF CIRCUITRY EACH VIEWED FROM THE TOP SIDE. SEE STACKUP FOR OVERALL DIMENSIONS AND INDIVIDUAL LAYER REQUIREMENTS.
3. MATERIAL: EPOXY GLASS, FR4 WITH A T<sub>g</sub> (GLASS TRANSITION TEMPERATURE) OF 170° C MINIMUM.
4. ALL TRACE WIDTHS ARE FINISH DIMENSIONS UNLESS OTHERWISE SPECIFIED IN THE STACKUP BELOW.
5. HOLE DIMENSIONS ARE FINISH SIZES  $\pm 0.003$ " TOLERANCE UNLESS OTHERWISE SPECIFIED IN THE DRILL TABLE.
6. HOLE PLATING TO BE 0.001" NOMINAL.
7. BOARD FINISH: SOLDER MASK OVER BARE COPPER THEN HASL. HOLES SMALLER THAN 0.014" MAY BE PLUGGED. THE SOLDER MASK SHALL BE LIQUID PHOTO IMAGEABLE IN THE COLOR GREEN.
8. SOLDERMASK CLEARANCES ARE PLOTTED SAME SIZE AS THE OUTER PAD, THE VENDOR WILL ADJUST TO MEET THEIR REQUIREMENTS.
9. SILK SCREEN LEGEND USING NON-CONDUCTIVE WHITE EPOXY INK.
10. REMOVE ALL LEGEND INK AND SOLDER MASK FROM PADS UNLESS OTHERWISE SPECIFIED.
11. ADD DATE CODE, MANUFACTURING CODE, AND MANUFACTURES SERIAL NUMBER TO THE BOARD AT THE PLACES INDICATED ON THE LEGEND LAYER.

| STACKUP | LAYER DESCRIPTION  | LAYER NAME | FINISH COPPER WEIGHT | IMPEDANCE OHM |
|---------|--------------------|------------|----------------------|---------------|
| ---     | SILK SCREEN LEGEND | SS_TOP     |                      |               |
| ---     | SOLDER MASK        | SM_TOP     |                      |               |
| ↑       | TOP SIDE TRACE     | LAYER1     | 1 OZ                 | NONE          |
| ↑       | INTERNAL TRACE     | LAYER2     | 1 OZ                 | NONE          |
| ↑       | POWER PLANE        | LAYER3     | 1 OZ                 | NONE          |
| ↑       | GROUND PLANE       | LAYER4     | 1 OZ                 | NONE          |
| ↑       | INTERNAL TRACE     | LAYER5     | 1 OZ                 | NONE          |
| ↑       | BOTTOM SIDE TRACE  | LAYER6     | 1 OZ                 | NONE          |
| ↓       | SOLDER MASK        | SM_BOT     |                      |               |
| ↓       | SILK SCREEN LEGEND | SS_BOT     |                      |               |

0.063"  
±15%



| Through Holes |               |                |                 |
|---------------|---------------|----------------|-----------------|
| Symbol        | Diameter (in) | Tolerance (in) | Plated Quantity |
| A             | 0.0120        |                | Yes 845         |
| B             | 0.0240        |                | Yes 120         |
| C             | 0.0310        |                | Yes 122         |
| D             | 0.0350        |                | Yes 21          |
| E             | 0.1250        |                | Yes 4           |
| F             | 0.0410        |                | No 2            |



SPACE DYNAMICS LABORATORY  
UTAH STATE UNIVERSITY RESEARCH FOUNDATION  
North Logan, Utah 84341

|              |                             |                           |              |
|--------------|-----------------------------|---------------------------|--------------|
| LAYER<br>FAB | TITLE<br>ION-F Camera Board | DRAWING NUMBER<br>30-0009 | PWB REV<br>B |
|--------------|-----------------------------|---------------------------|--------------|

4

3

2

1

D

D

C

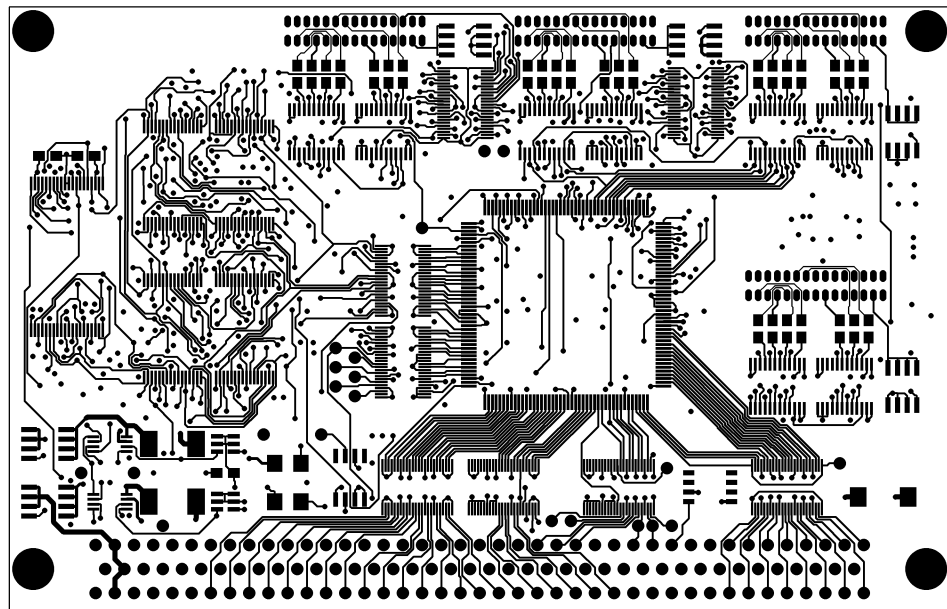
C

B

B

A

A



SPACE DYNAMICS LABORATORY  
 UTAH STATE UNIVERSITY RESEARCH FOUNDATION  
 North Logan, Utah 84341

|        |                    |                |         |
|--------|--------------------|----------------|---------|
| LAYER  | TITLE              | DRAWING NUMBER | PWB REV |
| LAYER1 | ION-F Camera Board | 30-0009        | B       |

4

3

2

1

D

D

C

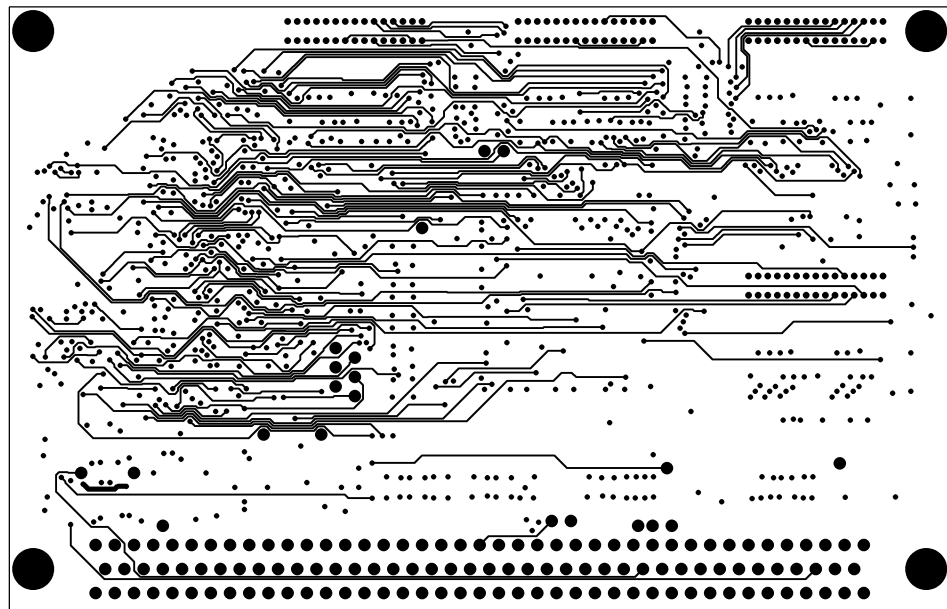
C

B

B

A

A



SPACE DYNAMICS LABORATORY  
 UTAH STATE UNIVERSITY RESEARCH FOUNDATION  
 North Logan, Utah 84341

|        |                    |                |         |
|--------|--------------------|----------------|---------|
| LAYER  | TITLE              | DRAWING NUMBER | PWB REV |
| LAYER2 | ION-F Camera Board | 30-0009        | B       |

4

3

2

1

D

D

C

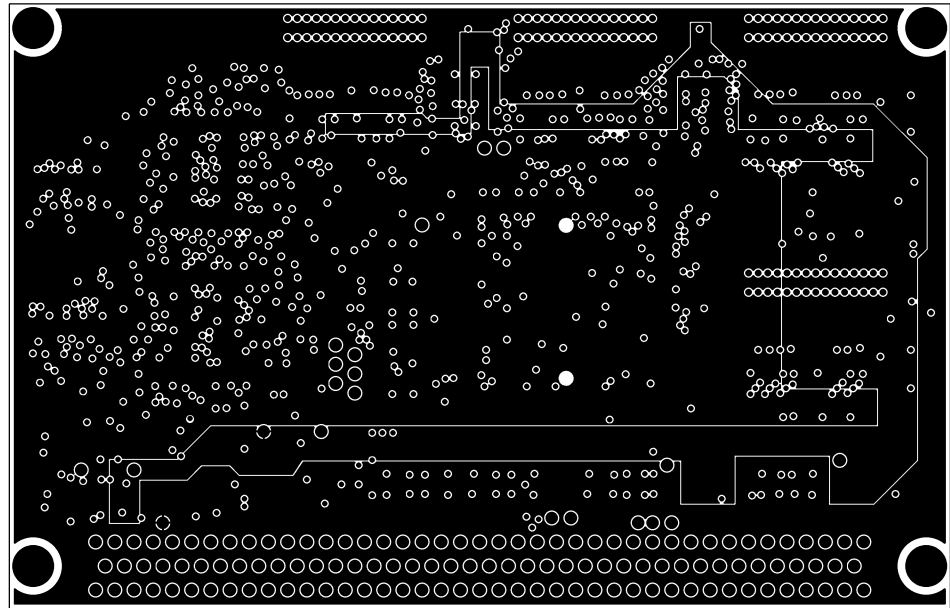
C

B

B

A

A



SPACE DYNAMICS LABORATORY  
 UTAH STATE UNIVERSITY RESEARCH FOUNDATION  
 North Logan, Utah 84341

|        |                    |                |         |
|--------|--------------------|----------------|---------|
| LAYER  | TITLE              | DRAWING NUMBER | PWB REV |
| LAYER3 | ION-F Camera Board | 30-0009        | B       |

4

3

2

1

D

D

C

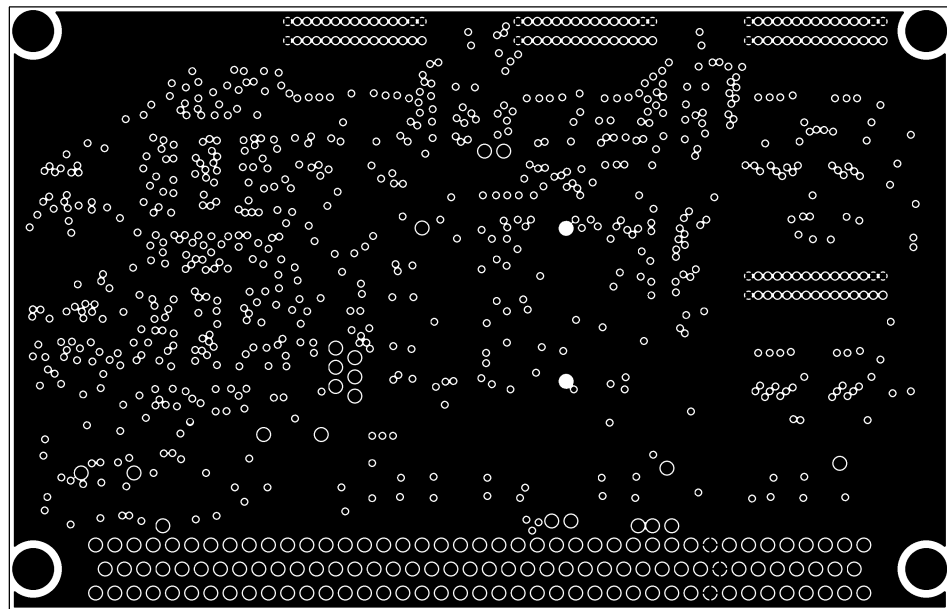
C

B

B

A

A



SPACE DYNAMICS LABORATORY  
 UTAH STATE UNIVERSITY RESEARCH FOUNDATION  
 North Logan, Utah 84341

|        |                    |                |         |
|--------|--------------------|----------------|---------|
| LAYER  | TITLE              | DRAWING NUMBER | PWB REV |
| LAYER4 | ION-F Camera Board | 30-0009        | B       |

4

3

2

1

D

D

C

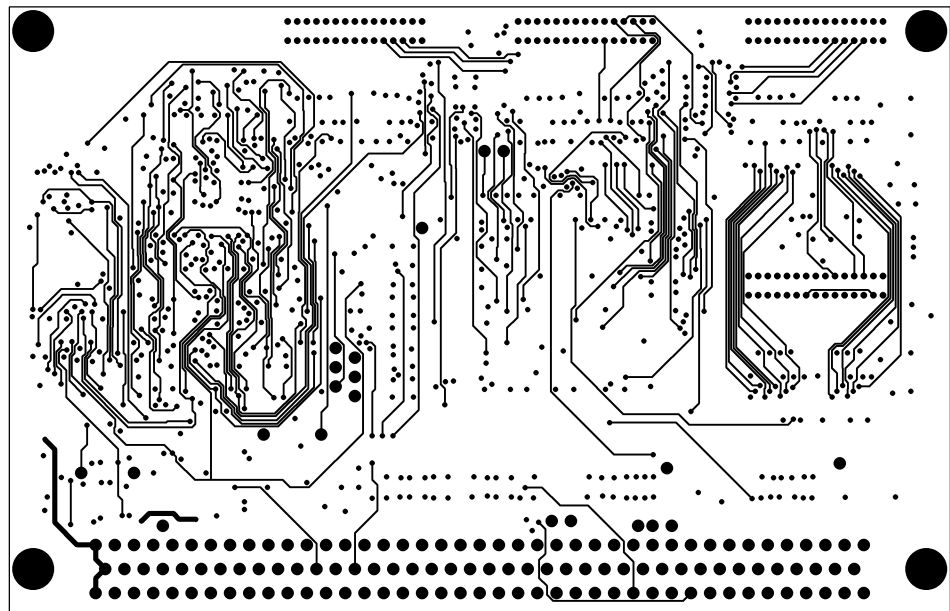
C

B

B

A

A



SPACE DYNAMICS LABORATORY  
 UTAH STATE UNIVERSITY RESEARCH FOUNDATION  
 North Logan, Utah 84341

|        |                    |                |         |
|--------|--------------------|----------------|---------|
| LAYER  | TITLE              | DRAWING NUMBER | PWB REV |
| LAYER5 | ION-F Camera Board | 30-0009        | B       |

4

3

2

1

D

D

C

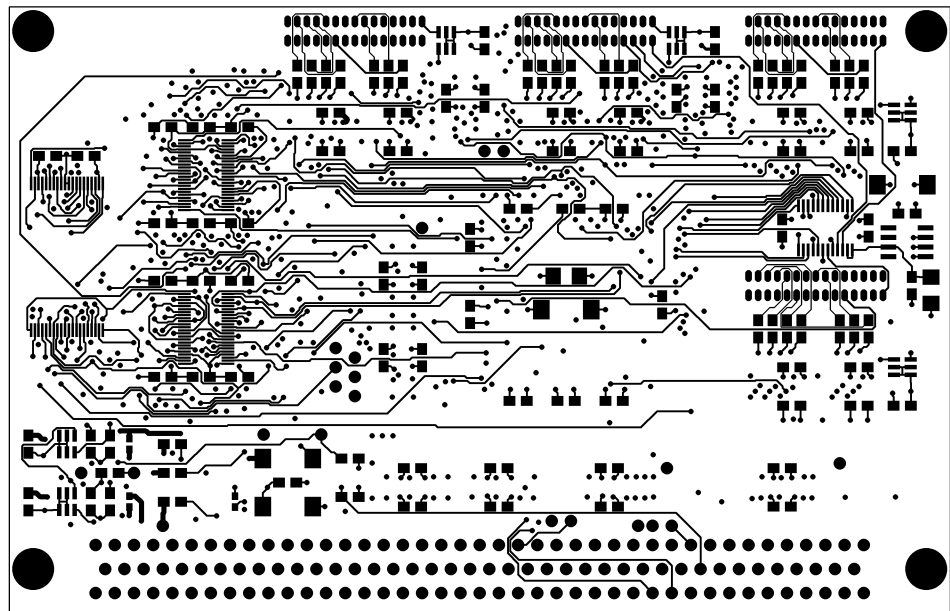
C

B

B

A

A



SPACE DYNAMICS LABORATORY  
 UTAH STATE UNIVERSITY RESEARCH FOUNDATION  
 North Logan, Utah 84341

|        |                    |                |         |
|--------|--------------------|----------------|---------|
| LAYER  | TITLE              | DRAWING NUMBER | PWB REV |
| LAYER6 | ION-F Camera Board | 30-0009        | B       |

4

3

2

1

D

D

C

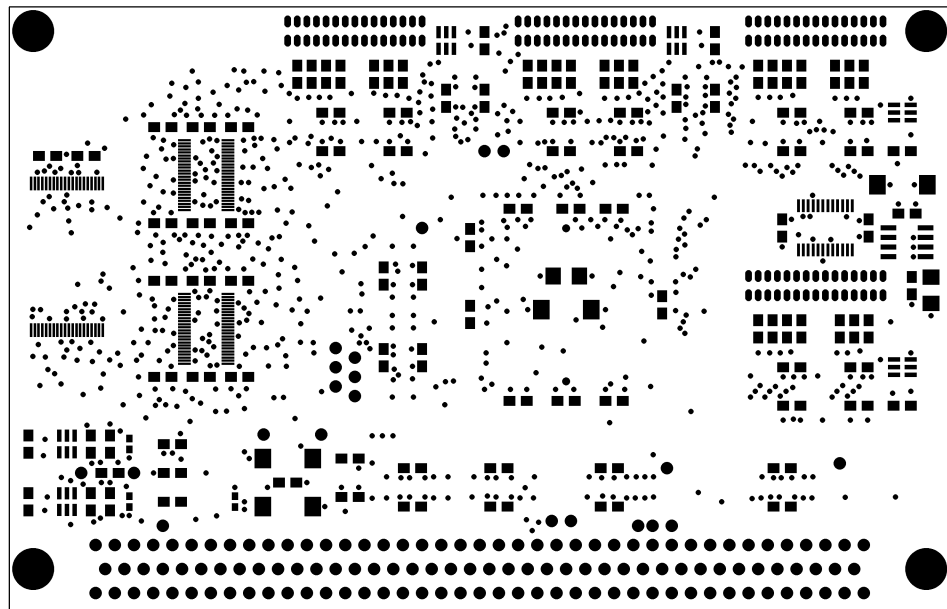
C

B

B

A

A



SPACE DYNAMICS LABORATORY  
 UTAH STATE UNIVERSITY RESEARCH FOUNDATION  
 North Logan, Utah 84341

|                 |                             |                           |              |
|-----------------|-----------------------------|---------------------------|--------------|
| LAYER<br>SM_BOT | TITLE<br>ION-F Camera Board | DRAWING NUMBER<br>30-0009 | PWB REV<br>B |
|-----------------|-----------------------------|---------------------------|--------------|

4

3

2

1

D

D

C

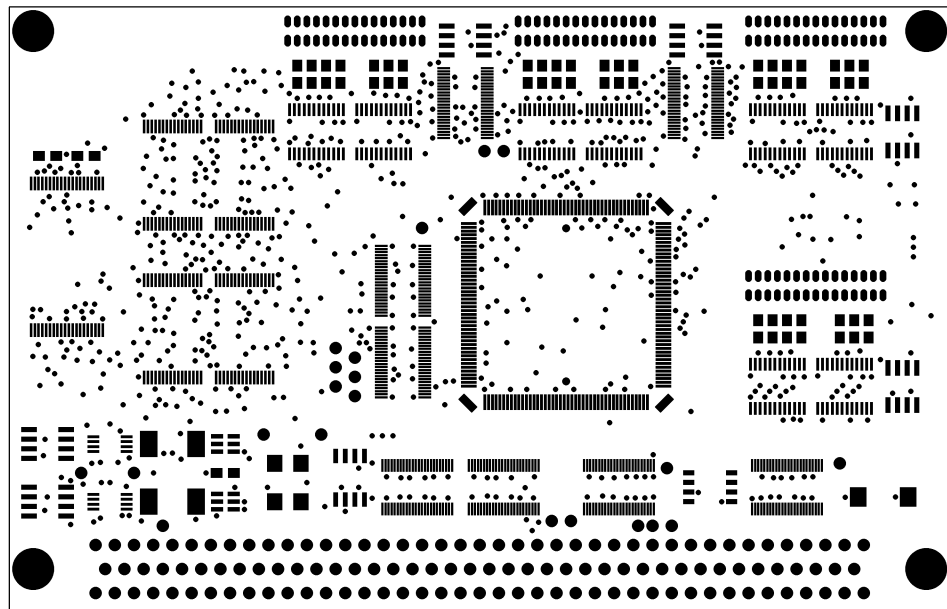
C

B

B

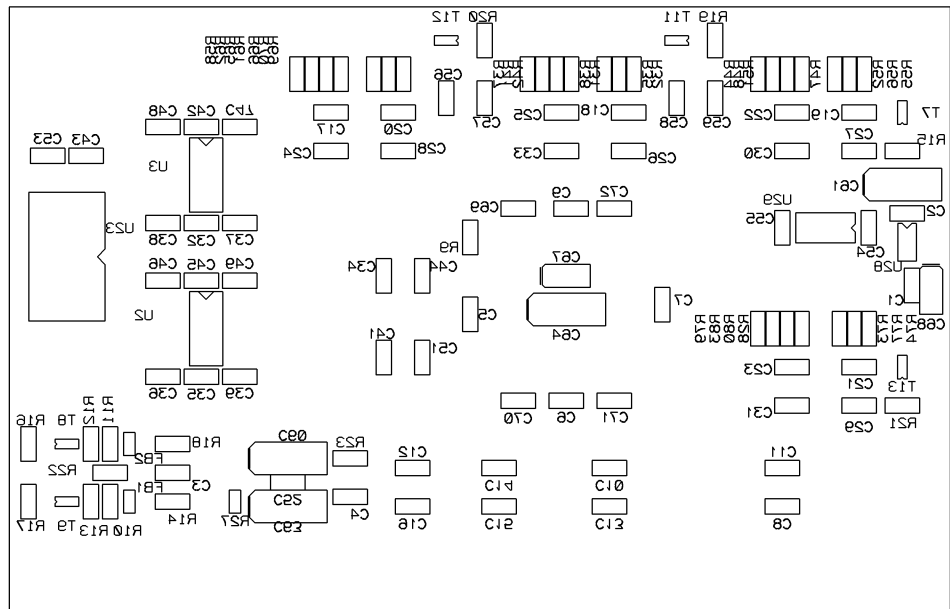
A

A



SPACE DYNAMICS LABORATORY  
 UTAH STATE UNIVERSITY RESEARCH FOUNDATION  
 North Logan, Utah 84341

|                 |                             |                           |              |
|-----------------|-----------------------------|---------------------------|--------------|
| LAYER<br>SM_TOP | TITLE<br>ION-F Camera Board | DRAWING NUMBER<br>30-0009 | PWB REV<br>B |
|-----------------|-----------------------------|---------------------------|--------------|



SPACE DYNAMICS LABORATORY  
 UTAH STATE UNIVERSITY RESEARCH FOUNDATION  
 North Logan, Utah 84341

|                 |                             |                           |              |
|-----------------|-----------------------------|---------------------------|--------------|
| LAYER<br>SS_BOT | TITLE<br>ION-F Camera Board | DRAWING NUMBER<br>30-0009 | PWB REV<br>B |
|-----------------|-----------------------------|---------------------------|--------------|



4

3

2

1

D

D

C

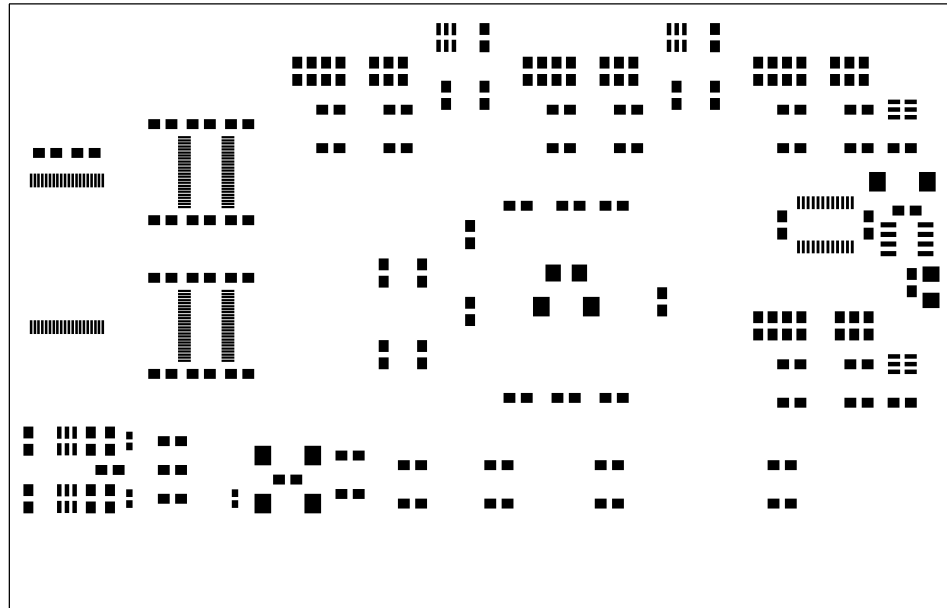
C

B

B

A

A



SPACE DYNAMICS LABORATORY  
 UTAH STATE UNIVERSITY RESEARCH FOUNDATION  
 North Logan, Utah 84341

|                 |                             |                           |              |
|-----------------|-----------------------------|---------------------------|--------------|
| LAYER<br>SP_BOT | TITLE<br>ION-F Camera Board | DRAWING NUMBER<br>30-0009 | PWB REV<br>B |
|-----------------|-----------------------------|---------------------------|--------------|

4

3

2

1

D

D

C

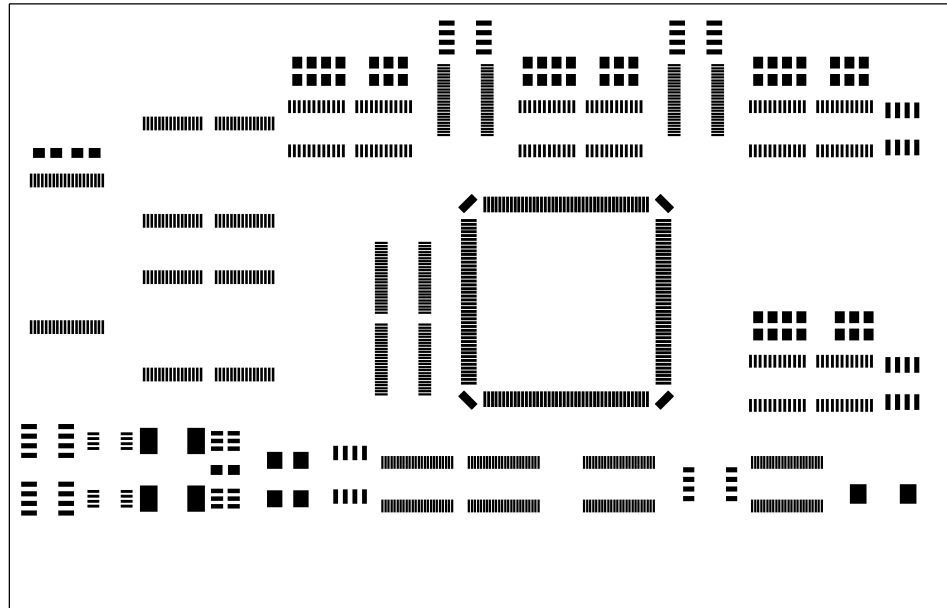
C

B

B

A

A



SPACE DYNAMICS LABORATORY  
 UTAH STATE UNIVERSITY RESEARCH FOUNDATION  
 North Logan, Utah 84341

|                 |                             |                           |              |
|-----------------|-----------------------------|---------------------------|--------------|
| LAYER<br>SP_TOP | TITLE<br>ION-F Camera Board | DRAWING NUMBER<br>30-0009 | PWB REV<br>B |
|-----------------|-----------------------------|---------------------------|--------------|